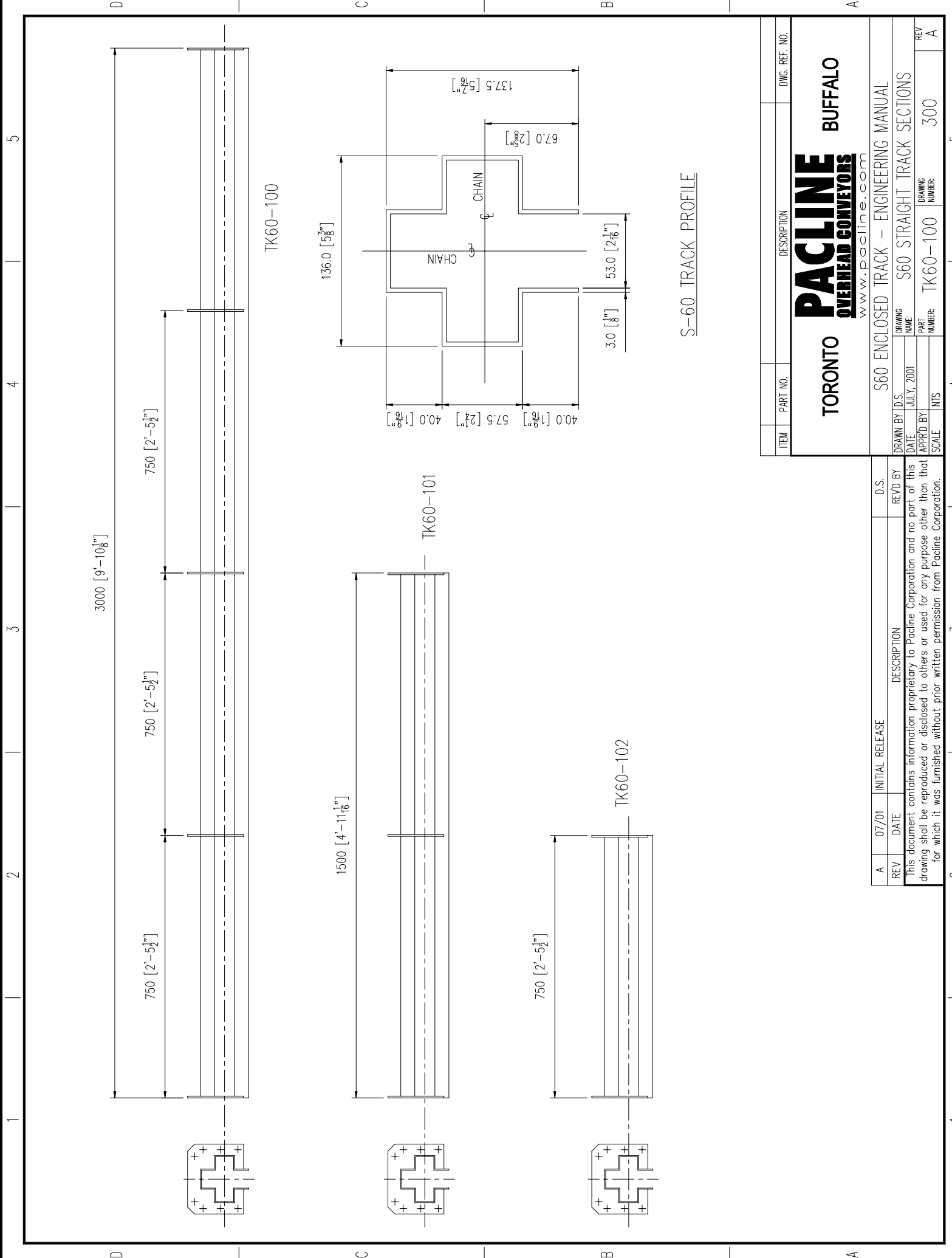


### PAC-MAX™ (S-60) COMPONENTS LIST

PART #	PART DESCRIPTION	DWG. #
<b>TRACK AND CHAIN</b>		
TK60-100	STRAIGHT TRACK SECTIONS	300
CH60-225	CHAIN	301
MU60-128	MAINTENANCE UNIT	312
TC60-154	TRACK CLAMP	313
PG60-106	END PLATE	302
<b>VERTICAL CURVES</b>		
VB60-XXX	VERTICAL DOWN CURVES	305
VB60-XXX	VERTICAL UP CURVES	306
<b>HORIZONTAL CURVES</b>		
HB60-XXX	HORIZONTAL CURVES	307
<b>TAKE-UP ASSEMBLY (all 180 degree)</b>		
	TAKE-UP ASSEMBLY	310
<b>DRIVE UNIT</b>		
	INLINE DRIVE UNIT (Motor Extra)	308
	INVERTED INLINE DRIVE UNIT (Motor Extra)	309
<b>LUBRICATOR</b>		
LR60-608	LUBRICATOR	311
<b>PENDANTS</b>		
PT60-207	SINGLE HOLE PENDANT	303
PT60-208	DOUBLE HOLE PENDANT	304
<b>TROLLEY SWITCHES</b>		
	MANUAL TROLLEY TRACK SWITCHES	314



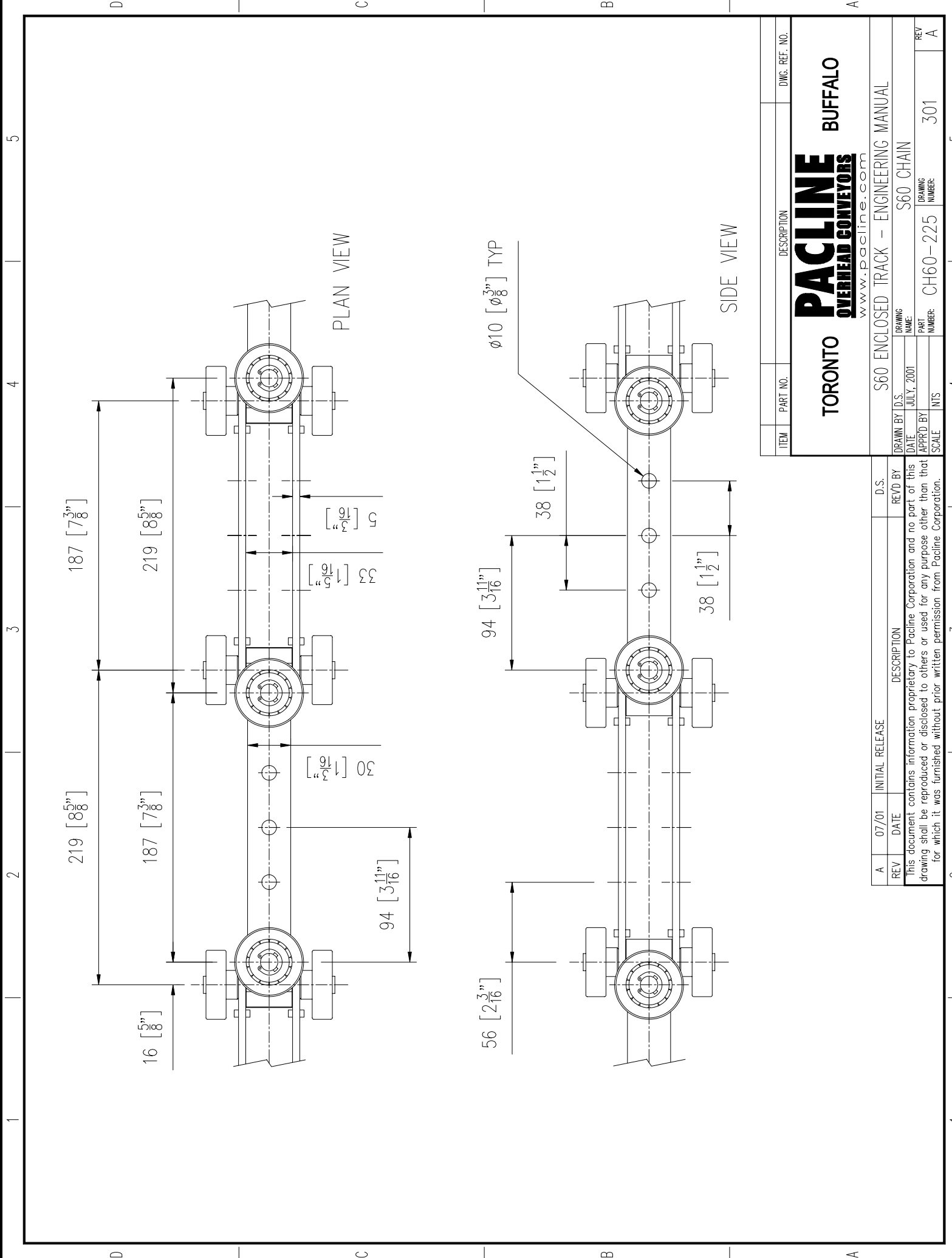
S-60 TRACK PROFILE

ITEM	PART NO.	DESCRIPTION	DWG. REF. NO.
		<b>TORONTO</b>	
		<b>PACLINE</b> <b>OVERHEAD CONVEYORS</b> www.pacline.com	<b>BUFFALO</b>
		S60 ENCLOSED TRACK - ENGINEERING MANUAL	
DRAWN BY	D.S.	DRAWING NAME	REV
DATE	JULY, 2001	S60 STRAIGHT TRACK SECTIONS	A
APPRD BY	NTS	PART NUMBER	
SCALE	NTS	TK60-100	300
		DRAWING NUMBER	

REV	07/01	INITIAL RELEASE	D.S.	REV'D BY
A				
DESCRIPTION				
This document contains information proprietary to Pacline Corporation and no part of this drawing shall be reproduced or disclosed to others or used for any purpose other than that for which it was furnished without prior written permission from Pacline Corporation.				

1 2 3 4 5

1 2 3 4 5



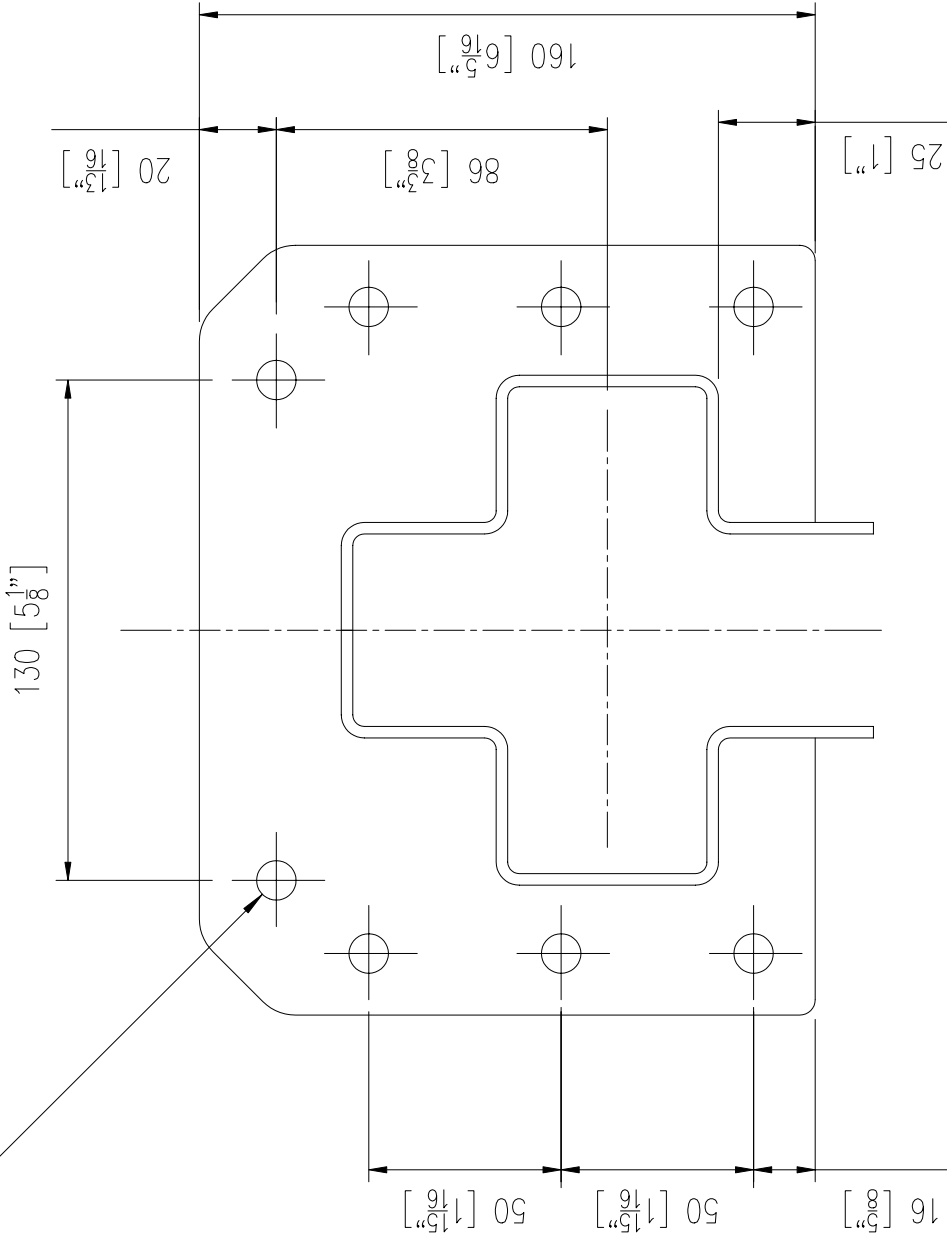
ITEM	PART NO.	DESCRIPTION	DWG. REF. NO.
		TORONTO	
		<b>PACLINE</b> OVERHEAD CONVEYORS www.pacline.com	
		BUFFALO	
		S60 ENCLOSED TRACK - ENGINEERING MANUAL	
DRAWN BY	D.S.	DRAWING NAME	
DATE	JULY, 2001	S60 CHAIN	
APPROD BY		PART NUMBER	301
SCALE	1:1	DRAWING NUMBER	301
		REV	A

REV	07/01	INITIAL RELEASE	D.S.	REV'D BY	
		DESCRIPTION			
This document contains information proprietary to Pacline Corporation and no part of this drawing shall be reproduced or disclosed to others or used for any purpose other than that for which it was furnished without prior written permission from Pacline Corporation.					

1 2 3 4 5

1 2 3 4 5

Ø10[Ø3/8"] TYP



ITEM	PART NO.	DESCRIPTION	DWG. REF. NO.
		<b>TORONTO</b>	
		<b>PACLINE</b> <b>OVERHEAD CONVEYORS</b> www.pacline.com	<b>BUFFALO</b>
		S60 ENCLOSED TRACK - ENGINEERING MANUAL	
DRAWN BY	D.S.	DRAWING NAME	
DATE	JULY, 2001	S60 END PLATE	
APPRD BY		PART NUMBER	
SCALE	NTS	PG60-106	302
			REV A

REV	DATE	INITIAL RELEASE	DESCRIPTION	REV'D BY	D.S.
A	07/01				
This document contains information proprietary to Pacline Corporation and no part of this drawing shall be reproduced or disclosed to others or used for any purpose other than that for which it was furnished without prior written permission from Pacline Corporation.					

1 2 3 4 5

1 2 3 4 5

D

C

B

A

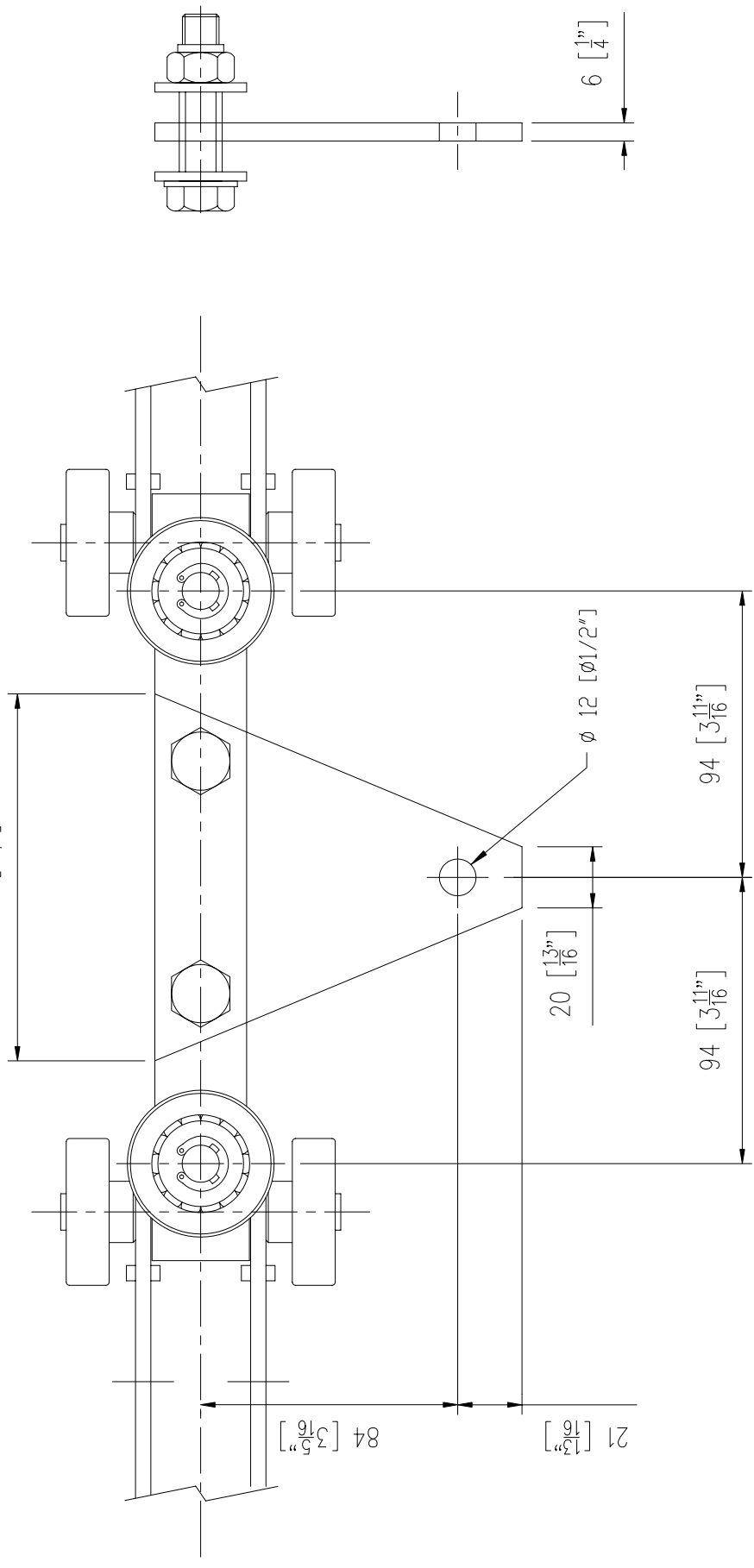
D

C

B

A

120 [4 $\frac{3}{4}$ "]



84 [3 $\frac{3}{4}$ "]

21 [ $\frac{13}{16}$ "]

20 [ $\frac{13}{16}$ "]

∅ 12 [∅1 $\frac{1}{2}$ "]

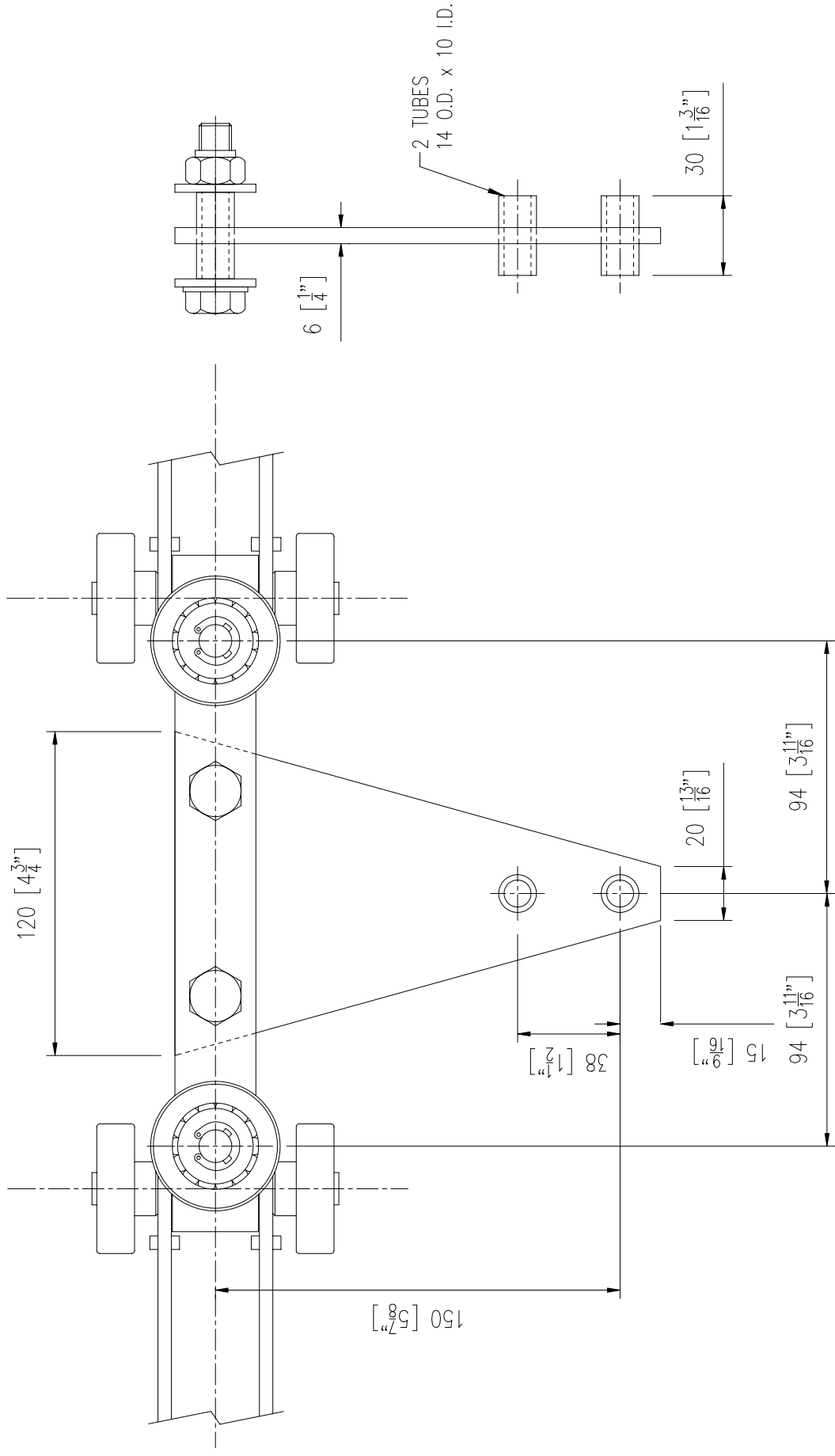
94 [3 $\frac{11}{16}$ "]

94 [3 $\frac{11}{16}$ "]

6 [ $\frac{1}{4}$ "]

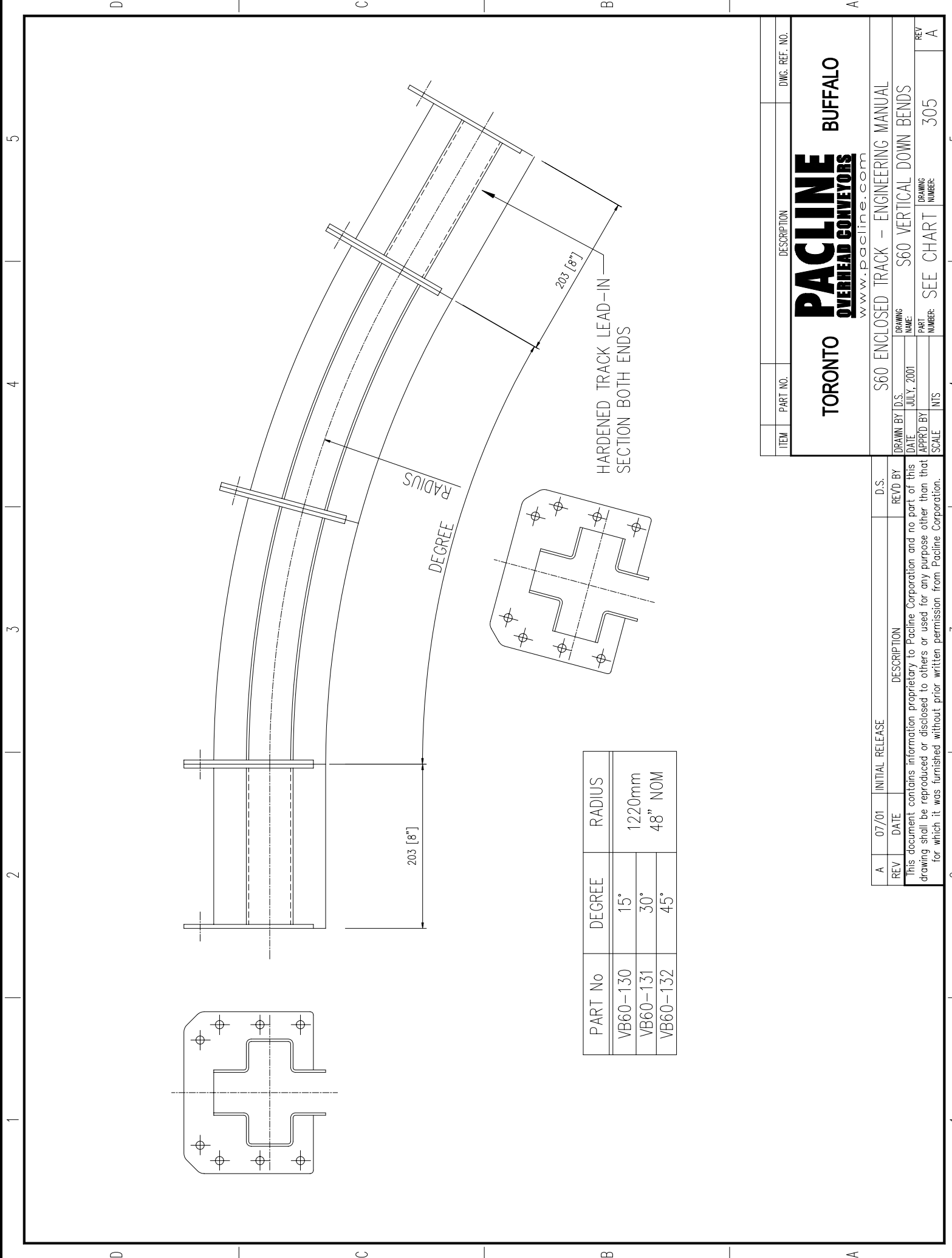
REV	DATE	INITIAL RELEASE	DESCRIPTION	D.S.	REV'D BY
A	07/01				
This document contains information proprietary to Pacline Corporation and no part of this drawing shall be reproduced or disclosed to others or used for any purpose other than that for which it was furnished without prior written permission from Pacline Corporation.					

ITEM	PART NO.	DESCRIPTION	DWG. REF. NO.
TORONTO		S60 ENCLOSED TRACK - ENGINEERING MANUAL	
BUFFALO		S60 SINGLE HOLE PENDANT	
www.pacline.com			
DRAWN BY D.S.		ENGINEERING MANUAL	
DATE JULY, 2001		S60 SINGLE HOLE PENDANT	
APPR'D BY		PART NUMBER: PT60-207	
SCALE NTS		DRAWING NUMBER: 303	
		REV A	



ITEM	PART NO.	DESCRIPTION	DWG. REF. NO.
		<b>TORONTO</b>	
		<b>PACLINE</b> OVERHEAD CONVEYORS www.pacline.com	<b>BUFFALO</b>
		S60 ENCLOSED TRACK - ENGINEERING MANUAL	
DRAWN BY	D.S.	DRAWING NAME	REV
DATE	JULY, 2001	S60 DOUBLE HOLE PENDANT	A
APPRD BY	NTS	PART NUMBER	
SCALE	NTS	PT60-208	304
		DRAWING NUMBER	
			A

A	07/01	INITIAL RELEASE	D.S.
REV	DATE	DESCRIPTION	REV'D BY
		This document contains information proprietary to Pacline Corporation and no part of this drawing shall be reproduced or disclosed to others or used for any purpose other than that for which it was furnished without prior written permission from Pacline Corporation.	



ITEM	PART NO.	DESCRIPTION	DWG. REF. NO.
TORONTO		<b>PACLINE</b> OVERHEAD CONVEYORS www.pacline.com	BUFFALO
S60 ENCLOSED TRACK - ENGINEERING MANUAL		DRAWING NAME: S60 VERTICAL DOWN BENDS	REV A
DRAWN BY D.S.	DATE: JULY, 2001	PART NUMBER: 305	REV A
APPRD BY	SCALE: NTS	SEE CHART	

REV	DATE	INITIAL RELEASE	DESCRIPTION	D.S.	REV'D BY
A	07/01				

This document contains information proprietary to Pacline Corporation and no part of this drawing shall be reproduced or disclosed to others or used for any purpose other than that for which it was furnished without prior written permission from Pacline Corporation.

1 2 3 4 5

1 2 3 4 5

1

2

3

4

5

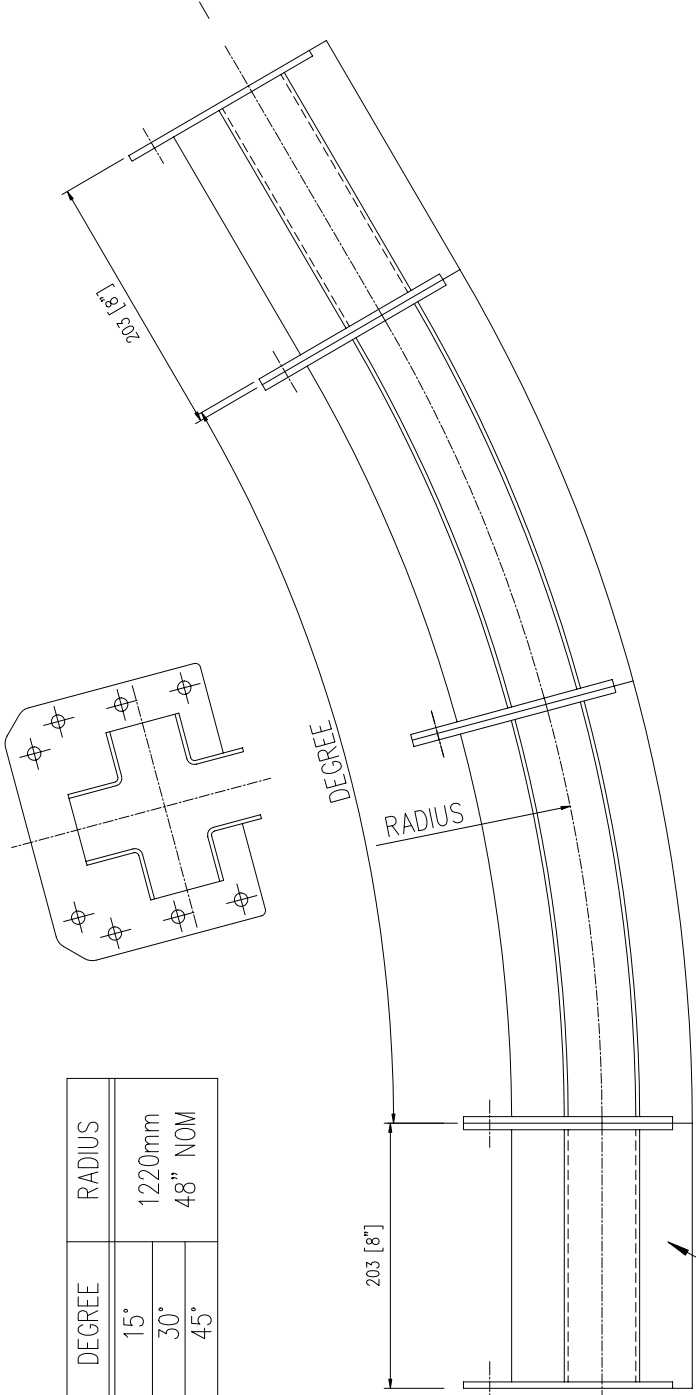
D

C

B

A

PART No	DEGREE	RADIUS
VB60-119	15°	1220mm
VB60-120	30°	48" NOM
VB60-121	45°	



HARDENED TRACK LEAD-IN  
SECTION BOTH ENDS

ITEM	PART NO.	DESCRIPTION	DWG. REF. NO.
		<b>TORONTO</b>	
		<b>PACLINE</b> <b>OVERHEAD CONVEYORS</b> www.pacline.com	
		<b>BUFFALO</b>	
S60 ENCLOSED TRACK - ENGINEERING MANUAL			
DRAWN BY	D.S.	DRAWING NAME:	S60 VERTICAL UP BEND
DATE:	JULY, 2001	PART NUMBER:	306
APPRD BY	NTS	SEE CHART	
SCALE	NTS	DRAWING NUMBER:	306
REV		REV	A

REV	DATE	INITIAL RELEASE	DESCRIPTION	D.S.	REV'D BY
A	07/01				
This document contains information proprietary to Pacline Corporation and no part of this drawing shall be reproduced or disclosed to others or used for any purpose other than that for which it was furnished without prior written permission from Pacline Corporation.					

1

2

3

4

5

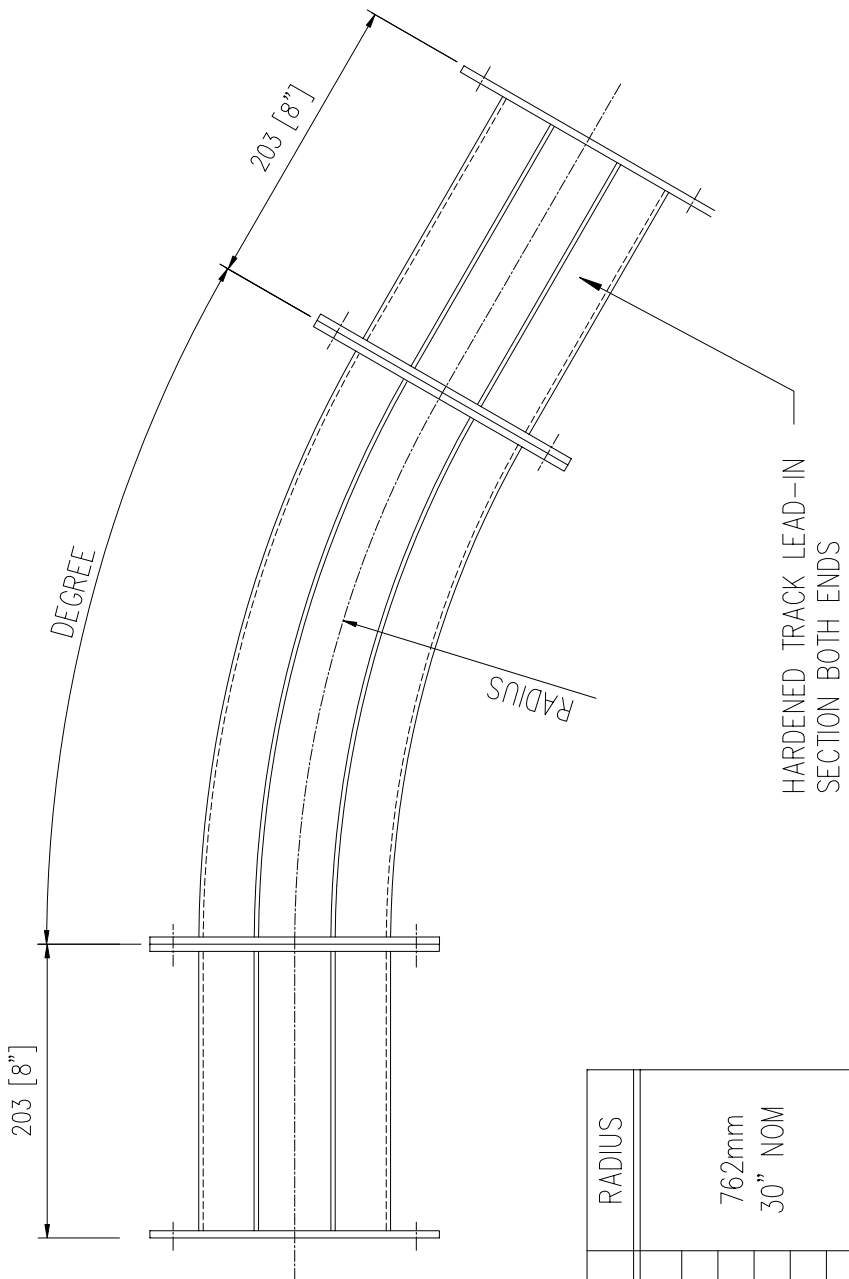
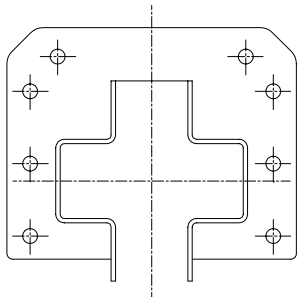
D

C

B

A



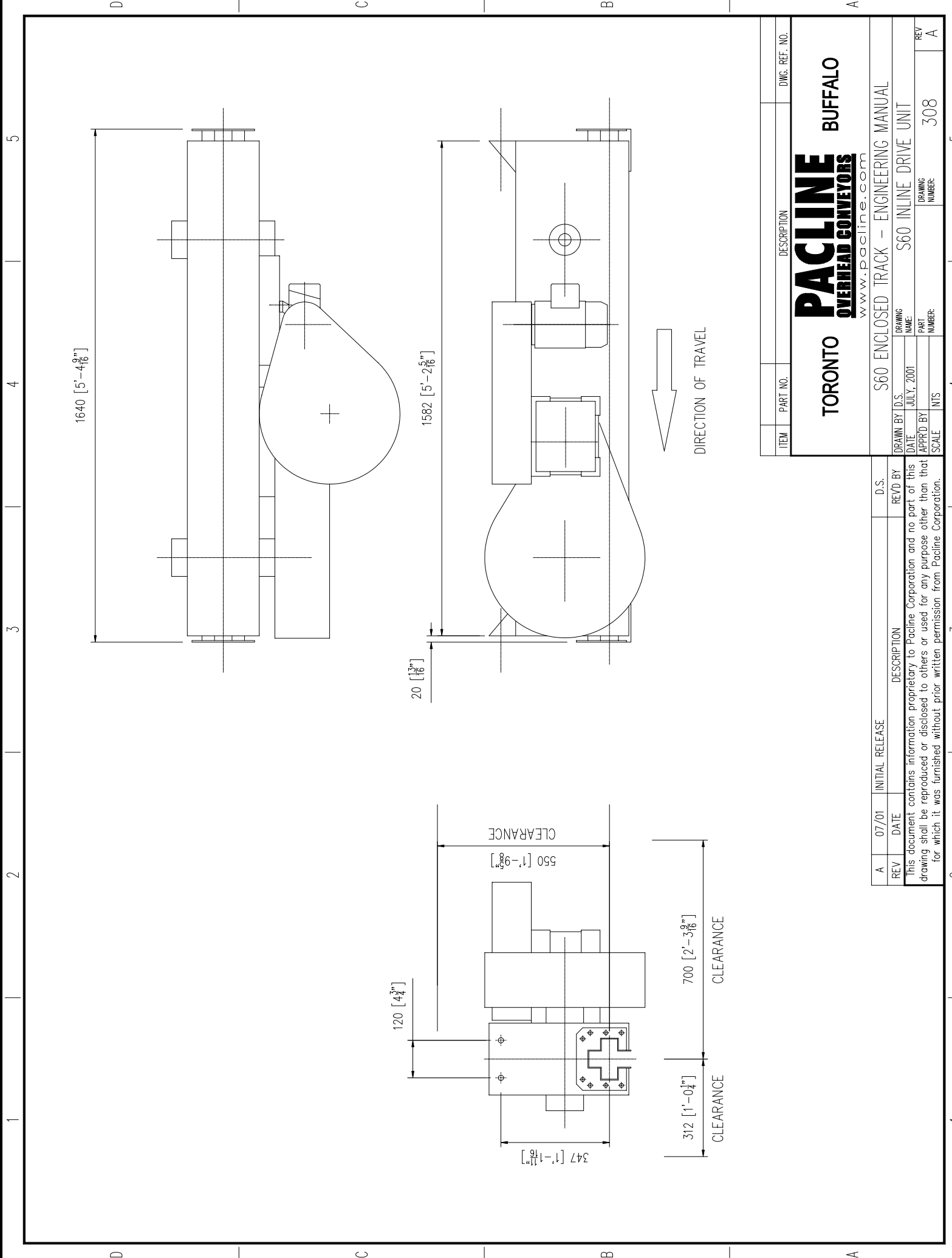


HARDENED TRACK LEAD-IN SECTION BOTH ENDS

PART No	DEGREE	RADIUS
HB60-107	15°	762mm 30" NOM
HB60-108	30°	
HB60-109	45°	
HB60-110	60°	
HB60-111	90°	
HB60-112	180°	

ITEM	PART NO.	DESCRIPTION	DWG. REF. NO.
TORONTO		<b>PACLINE</b> OVERHEAD CONVEYORS www.pacline.com	BUFFALO
S60 ENCLOSED TRACK - ENGINEERING MANUAL			
DRAWN BY D.S.	DATE	DRAWING NAME	PART NUMBER
REVD BY	DATE	DRAWING NAME	PART NUMBER
APPRD BY	DATE	DRAWING NAME	PART NUMBER
SCALE	INTS	SEE CHART	307
REV			A

REV	DATE	DESCRIPTION	D.S.
A	07/01	INITIAL RELEASE	
This document contains information proprietary to Pacline Corporation and no part of this drawing shall be reproduced or disclosed to others or used for any purpose other than that for which it was furnished without prior written permission from Pacline Corporation.			

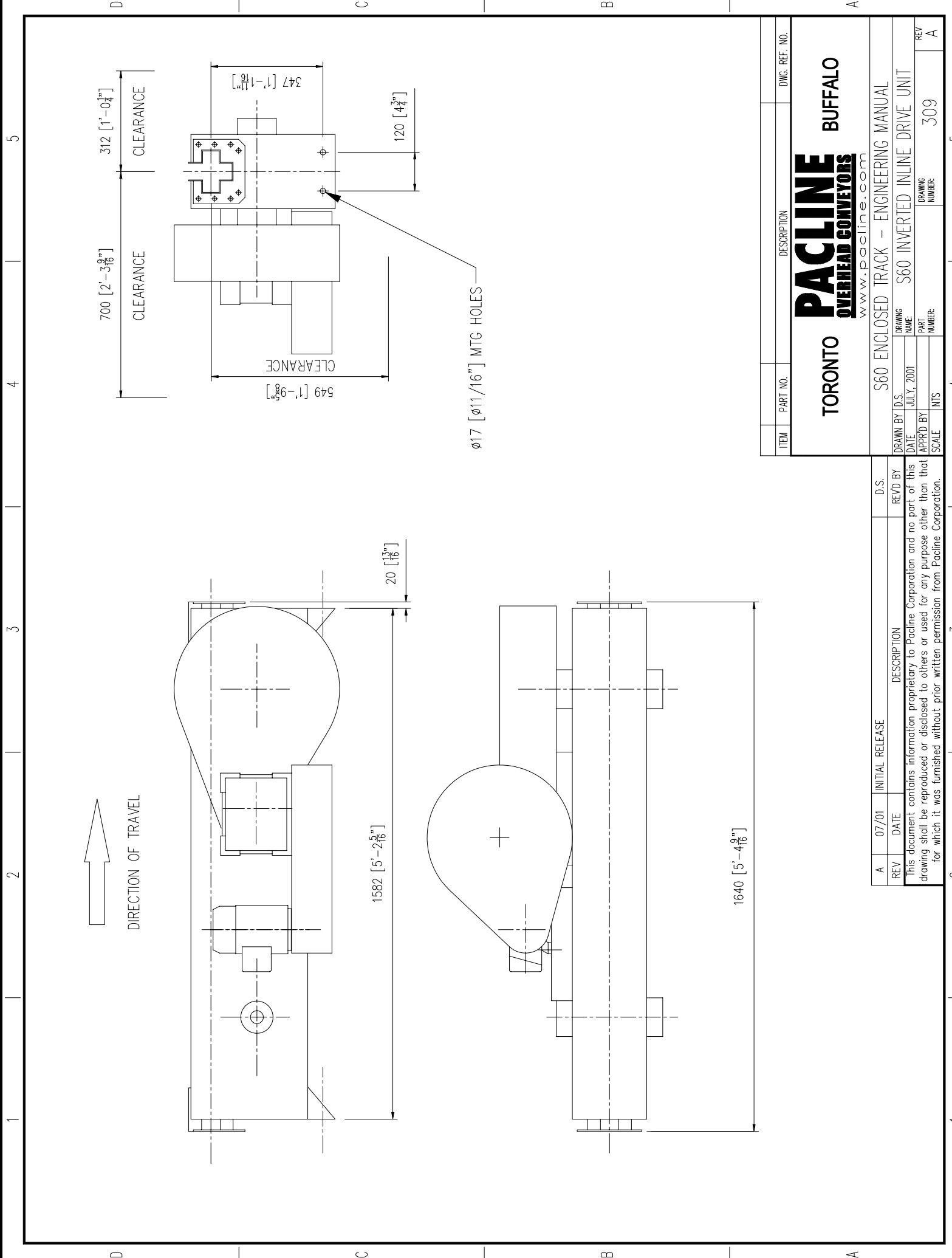


ITEM	PART NO.	DESCRIPTION	DWG. REF. NO.

**TORONTO** **PACLINE** **BUFFALO**  
**OVERHEAD CONVEYORS**  
[www.pacline.com](http://www.pacline.com)

S60 ENCLOSED TRACK - ENGINEERING MANUAL	DRAWING NAME:	S60 INLINE DRIVE UNIT
DRAWN BY D.S.	DATE:	JULY, 2001
REV'D BY	APPR'D BY	
DESCRIPTION	SCALE	NTS
This document contains information proprietary to Pacline Corporation and no part of this drawing shall be reproduced or disclosed to others or used for any purpose other than that for which it was furnished without prior written permission from Pacline Corporation.		
INITIAL RELEASE	DATE	07/01
DESCRIPTION	DATE	07/01
D.S.	REV'D BY	
PART NUMBER:	DRAWING NUMBER:	308
REV	REV	A

07/01	INITIAL RELEASE	D.S.
07/01	DATE	REV'D BY
07/01	DATE	APPR'D BY
07/01	DATE	SCALE
07/01	DATE	DESCRIPTION
07/01	DATE	DRAWING NAME:
07/01	DATE	DRAWING NUMBER:
07/01	DATE	REV



ITEM	PART NO.	DESCRIPTION	DWG. REF. NO.
		<b>TORONTO</b>	
		<b>PACLINE</b> <b>OVERHEAD CONVEYORS</b> www.pacline.com	<b>BUFFALO</b>
		S60 ENCLOSED TRACK - ENGINEERING MANUAL	
DRAWN BY	D.S.	DRAWING NAME	S60 INVERTED INLINE DRIVE UNIT
DATE	JULY, 2001	PART NUMBER	309
APPRD BY	NTS	SCALE	REV A

REV	DATE	INITIAL RELEASE	DESCRIPTION	D.S.	REV'D BY
A	07/01				
This document contains information proprietary to Pacline Corporation and no part of this drawing shall be reproduced or disclosed to others or used for any purpose other than that for which it was furnished without prior written permission from Pacline Corporation.					

1 2 3 4 5

1 2 3 4 5

DIRECTION OF TRAVEL

$\phi 17 [\phi 11/16"]$  MTC HOLES

1582 [5'-2 5/16"]

1640 [5'-4 9/16"]

700 [2'-3 9/16"]

CLEARANCE

312 [1'-0 4/16"]

CLEARANCE

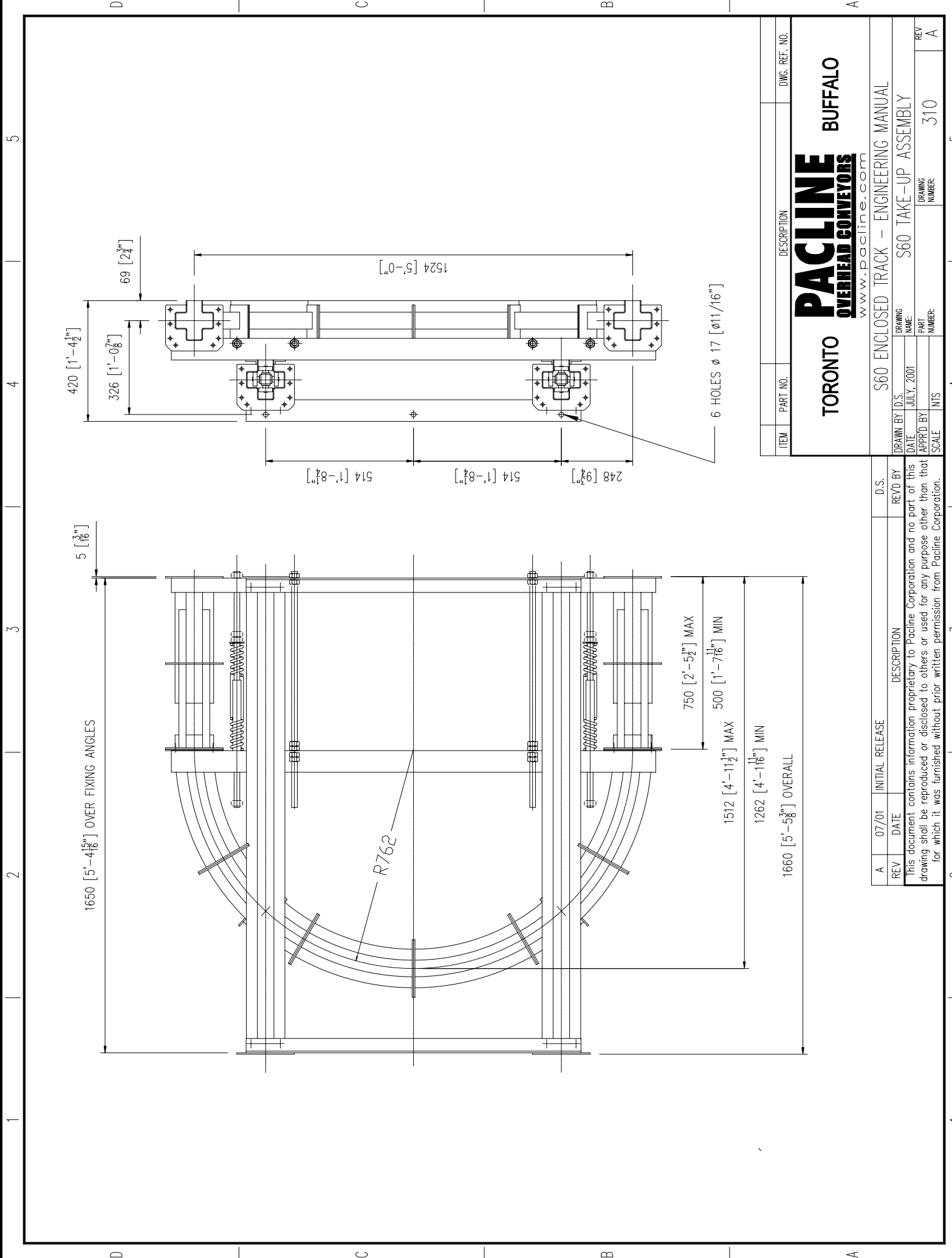
549 [1'-9 8/16"]

CLEARANCE

347 [1'-1 11/16"]

20 [13/16"]

120 [4 3/4"]



ITEM	PART NO.	DESCRIPTION	DWG. REF. NO.
TORONTO		<b>PACLINE</b> OVERHEAD CONVEYORS www.pacline.com	BUFFALO
S60 ENCLOSED TRACK - ENGINEERING MANUAL			
DRAWN BY	D.S.	DRAWING NAME	S60 TAKE-UP ASSEMBLY
DATE	JULY, 2001	PART NUMBER	310
APPRD BY	NTS	SCALE	REV A

A	07/01	INITIAL RELEASE	D.S.
REV	DATE	DESCRIPTION	REV'D BY
This document contains information proprietary to Pacline Corporation and no part of this drawing shall be reproduced or disclosed to others or used for any purpose other than that for which it was furnished without prior written permission from Pacline Corporation.			

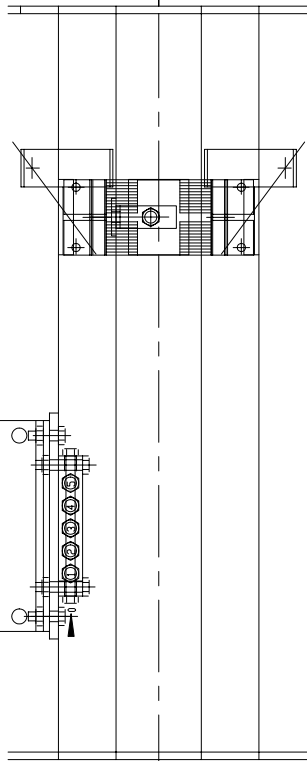
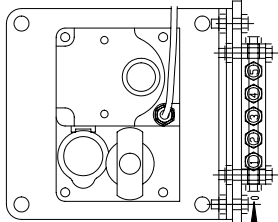
1 2 3 4 5

1 2 3 4 5

D C B A

D C B A

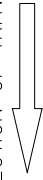
2 LITRE OIL  
RESERVOIR



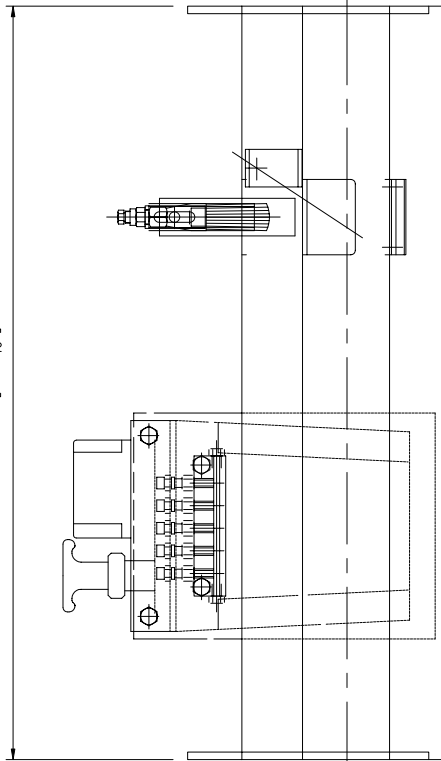
250 [9<sup>7</sup>/<sub>8</sub>] CLEAR

200 [7<sup>7</sup>/<sub>8</sub>] CLEAR

DIRECTION OF TRAVEL

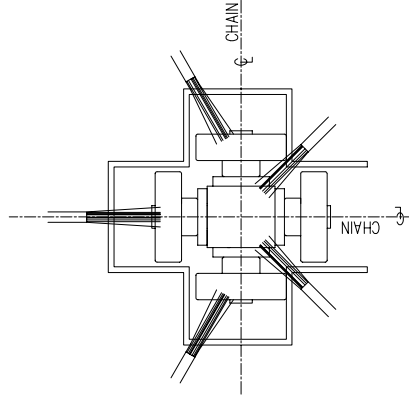


500 [1'-7<sup>11</sup>/<sub>16</sub>"]



225 [8<sup>7</sup>/<sub>8</sub>] CLEAR

69 [2<sup>11</sup>/<sub>16</sub>"]



CONTACT POINTS OF  
LUBRICATOR BRUSHES

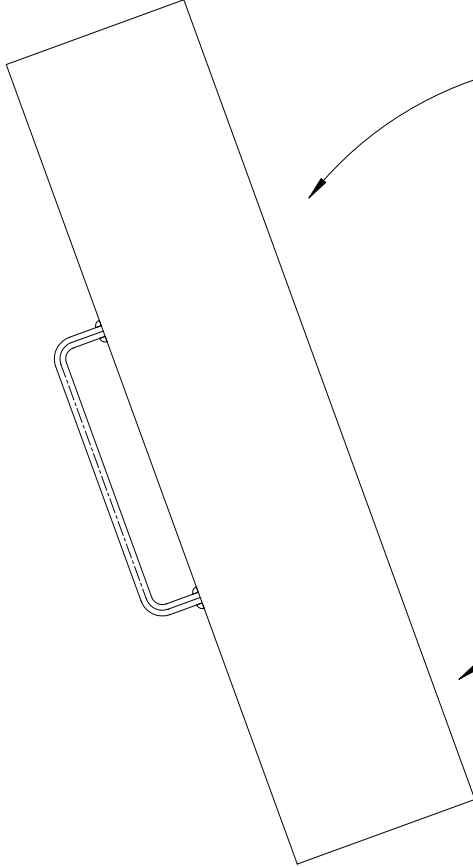
REV	DATE	INITIAL RELEASE	DESCRIPTION	D.S.	REV'D BY
A	07/01				
This document contains information proprietary to Pacline Corporation and no part of this drawing shall be reproduced or disclosed to others or used for any purpose other than that for which it was furnished without prior written permission from Pacline Corporation.					

ITEM	PART NO.	DESCRIPTION	DWG. REF. NO.
		S60 ENCLOSED TRACK - ENGINEERING MANUAL	
		S60 LUBRICATOR UNIT	
		SCALE: NTS	
		PART NUMBER: LR60-608	
		DRAWING NUMBER: 311	
		REV: A	

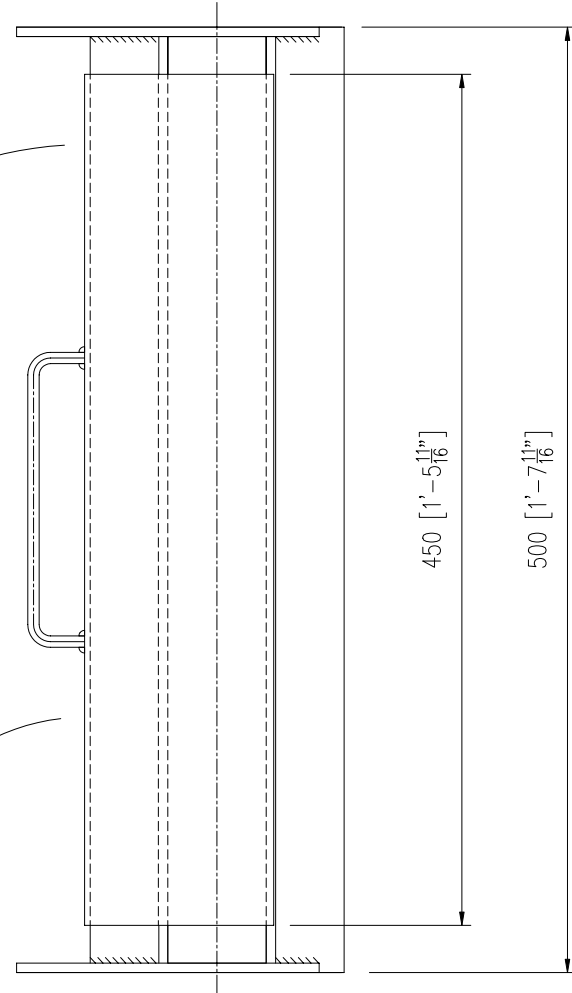
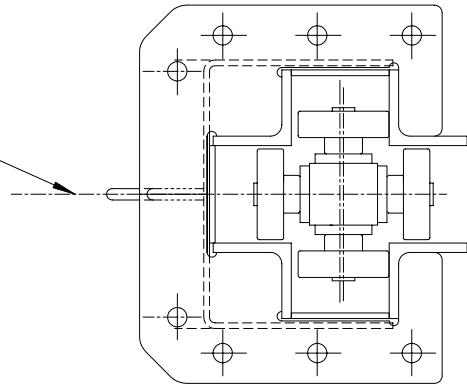
**TORONTO**  
**PACLINE**  
**OVERHEAD CONVEYORS**  
www.pacline.com  
**BUFFALO**

DRAWING NAME	DRAWING DATE	DRAWN BY D.S.
S60 LUBRICATOR UNIT	JULY, 2001	
APPROVED BY	SCALE	NTS

NOTE: COVER IS NOT TO BE FIXED  
DOWN. COVER TO SIT FLAT ON  
MAINTENANCE SECTION



END PLATES SPLIT  
ALONG VERTICAL  
CENTRELINE



ITEM	PART NO.	DESCRIPTION	DWG. REF. NO.
		<b>TORONTO</b>	
		<b>PACLINE</b> <b>OVERHEAD CONVEYORS</b> www.pacline.com	<b>BUFFALO</b>
		S60 ENCLOSED TRACK - ENGINEERING MANUAL	
DRAWN BY D.S.		DRAWING NAME:	
DATE:	JULY, 2001		
APPRD BY:		PART NUMBER:	
SCALE:	NTS	MU60-128	312
			REV A

A	07/01	INITIAL RELEASE	D.S.
REV	DATE	DESCRIPTION	REV'D BY
This document contains information proprietary to Pacline Corporation and no part of this drawing shall be reproduced or disclosed to others or used for any purpose other than that for which it was furnished without prior written permission from Pacline Corporation.			

5

4

3

2

1

D

C

B

A

D

C

B

A

5

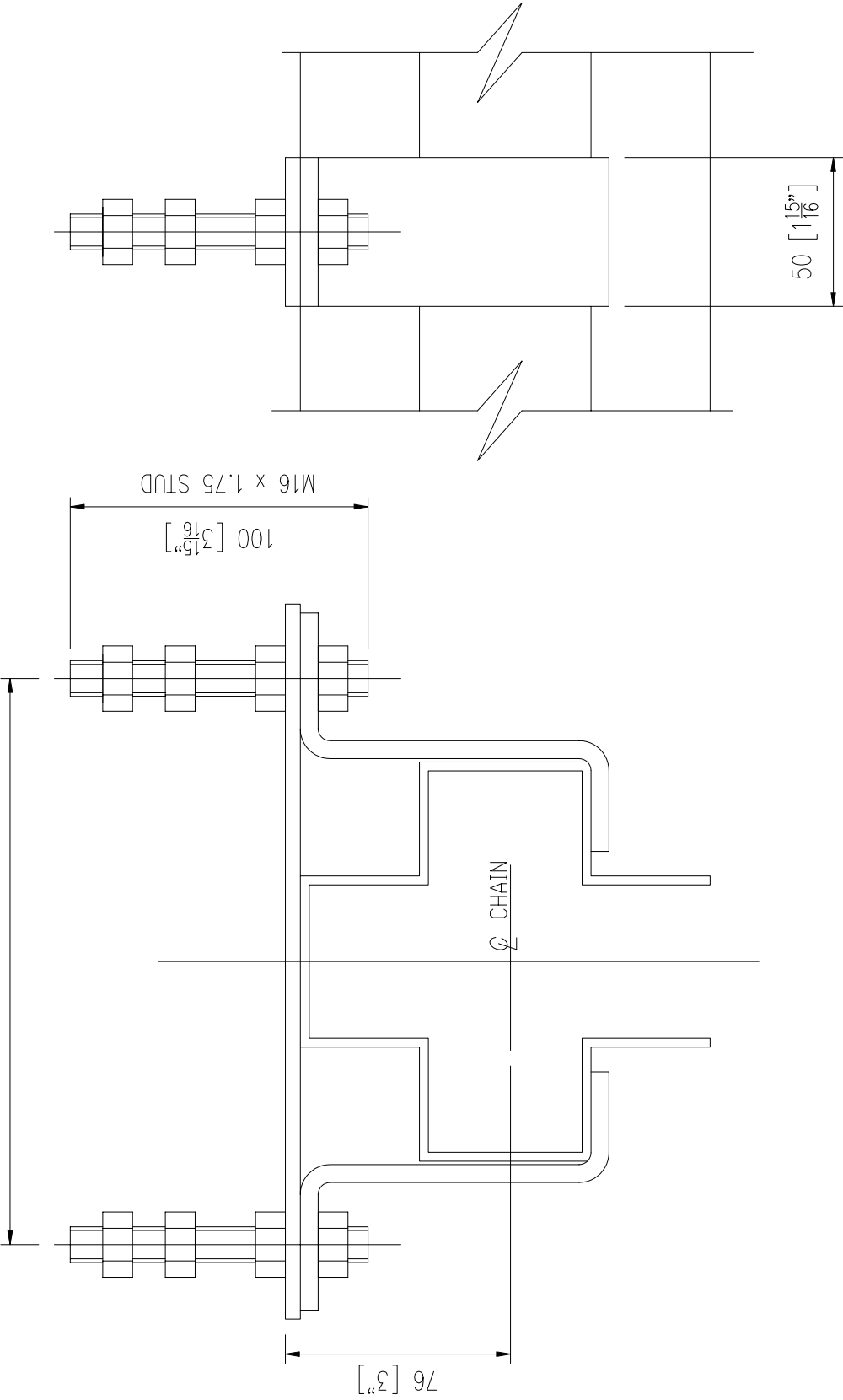
4

3

2

1

190 [7 $\frac{1}{2}$ "]



M16 x 1.75 STUD  
100 [3 $\frac{15}{16}$ "]

76 [3"]

50 [1 $\frac{15}{16}$ "]

Ø CHAIN

ITEM	PART NO.	DESCRIPTION	DWG. REF. NO.
		<b>TORONTO</b>	
		<b>PACLINE</b>	
		<b>OVERHEAD CONVEYORS</b>	
		www.pacline.com	
		<b>BUFFALO</b>	
		S60 ENCLOSED TRACK - ENGINEERING MANUAL	
		S60 TRACK CLAMP	
DRAWN BY	D.S.	DRAWING NAME	
DATE	JULY, 2001	PART NUMBER	313
APPRD BY	NTS	SCALE	REV A

REV	07/01	INITIAL RELEASE	D.S.	REV'D BY
		DESCRIPTION		
This document contains information proprietary to Pacline Corporation and no part of this drawing shall be reproduced or disclosed to others or used for any purpose other than that for which it was furnished without prior written permission from Pacline Corporation.				

5

4

3

2

1

D

C

B

A

5

4

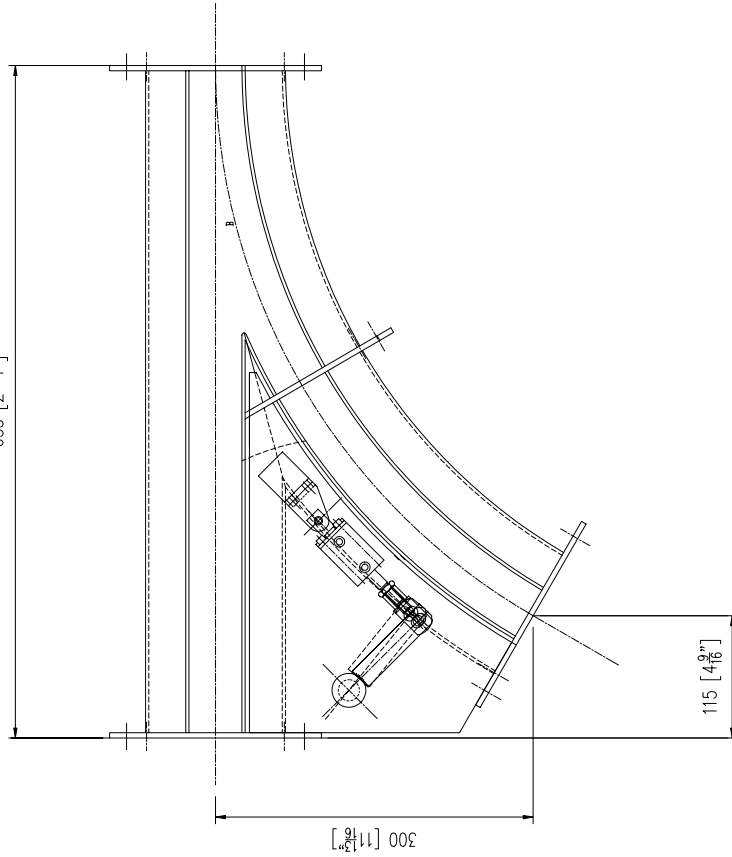
3

2

1

1 2 3 4 5

635 [2'-1"]

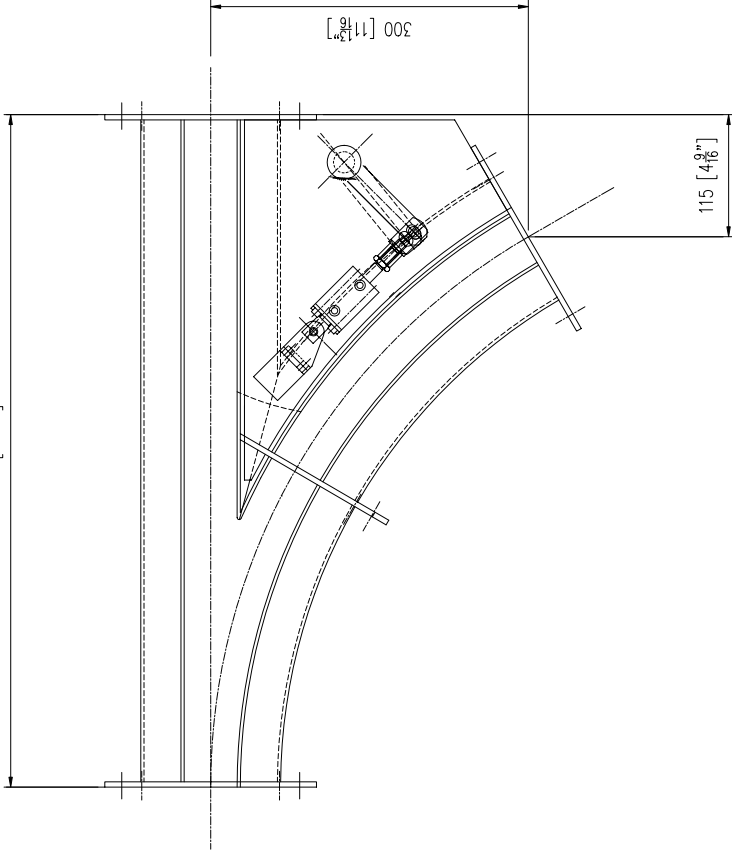


300 [11 $\frac{3}{8}$ "]

115 [4 $\frac{9}{16}$ "]

PNEUMATIC LHD DIVERGENT

635 [2'-1"]



300 [11 $\frac{3}{8}$ "]

115 [4 $\frac{9}{16}$ "]

PNEUMATIC RHD DIVERGENT

STANDARD SWITCHES ARE  
 DIVERGENT OR CONVERGENT  
 PNEUMATIC OR MANUAL  
 60 DEG X 600 RAD

ITEM	PART NO.	DESCRIPTION	DWG. REF. NO.
TORONTO		<b>PACLINE</b> OVERHEAD CONVEYORS www.pacline.com	BUFFALO
S60 ENCLOSED TRACK - ENGINEERING MANUAL			
DRAWN BY	D.S.	DRAWING NAME	S60 MANUAL TROLLEY TRACK SWITCH
DATE	JULY, 2001	PART NUMBER	314
APPRD BY	NTS	REV	A
SCALE	NTS	DRAWING NUMBER	314

REV	07/01	INITIAL RELEASE	D.S.
A			
DESCRIPTION			
This document contains information proprietary to Pacline Corporation and no part of this drawing shall be reproduced or disclosed to others or used for any purpose other than that for which it was furnished without prior written permission from Pacline Corporation.			
REV	DATE	INITIAL RELEASE	D.S.
A			

D C B A

D C B A

1 2 3 4 5